

The word "velocity" is written in a large, white, italicized sans-serif font. Below it, the "NorthAmerican" logo is displayed in a smaller white font, with a small star above the letter 'i' in "American". Below "NorthAmerican" is the word "BANCARD" in a smaller, all-caps, white sans-serif font.

velocity
NorthAmerican[®]
BANCARD

Velocity RMS-Plugin

Velocity RMS-Plugin Installation Guide

Installation

Download the VSI RMS Plugging installer from:

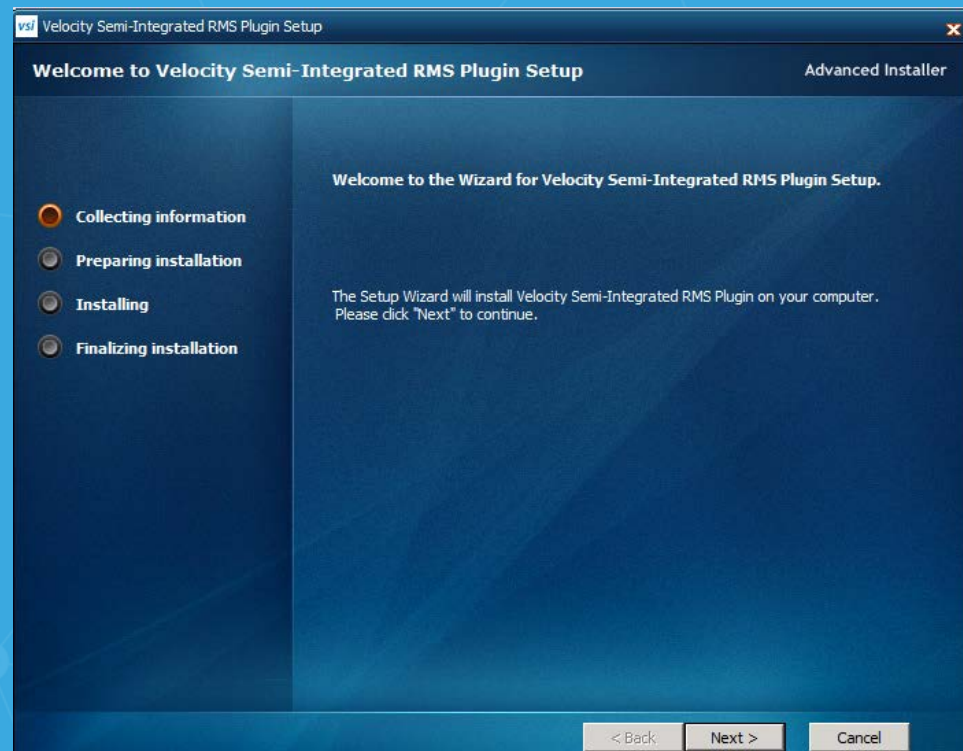
<https://nabvelocity.com/solutions/checkout/semi-integrated/emv-rms-plugin/>

Locate the downloaded zip file on your machine and extract the files

Double click the VSIRMSPlugin-Prod.exe file

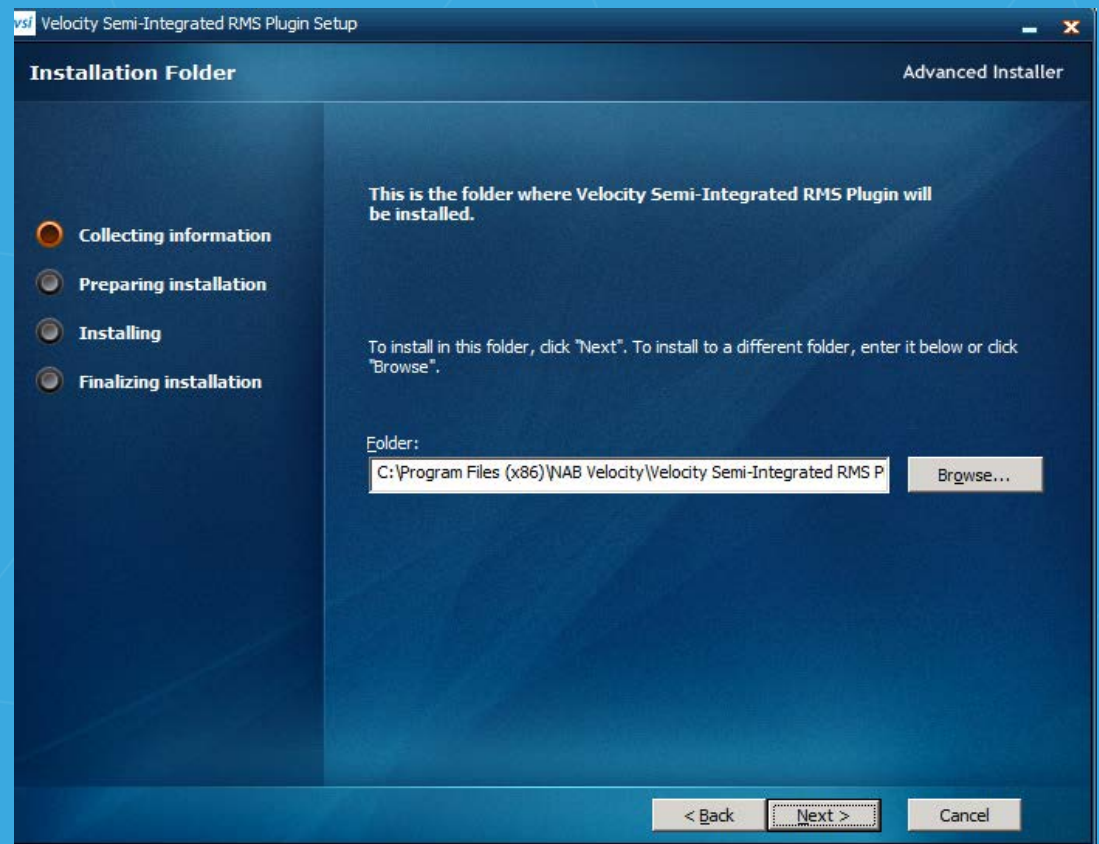
Click Next on the first Installation screen

Important Note: It is required to run the Z report prior to the first RMH run with the plugin in order for the updated payment options to be displayed in the checkout screen.



Velocity RMS-Plugin Installation Guide

The default plugin installation path is C:\Program Files\NAB Velocity\Velocity Semi-Integrated RMS Plugin
You can change that if you wish by clicking Browse and selecting a new location
Click Next in the Preparing Installation and Installing screens
When the installation is completed click Finish to exit the Setup Wizard



Velocity RMS-Plugin Installation Guide

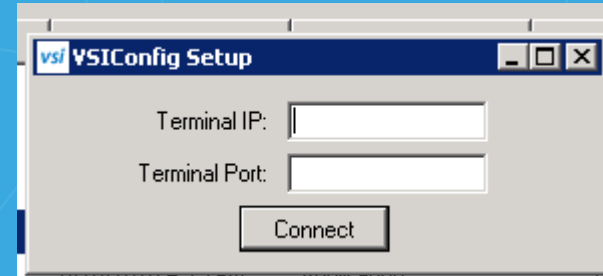
Configuring the terminal with the RMS Plug-in

When the installation is completed the VSIconfig Setup dialog box will appear

Enter the Terminal's IP (Instruction on how to obtain the IP address and configure the terminal are on page 6)

Enter 6200 for Terminal Port

Click Connect



RMS plugin configuration

The VSIconfig Editor allows you to set certain options in the RMS plugin

From the Start menu double click VSIconfigUI to launch the VSIconfig Editor. If you cannot locate the editor in the start menu navigate to

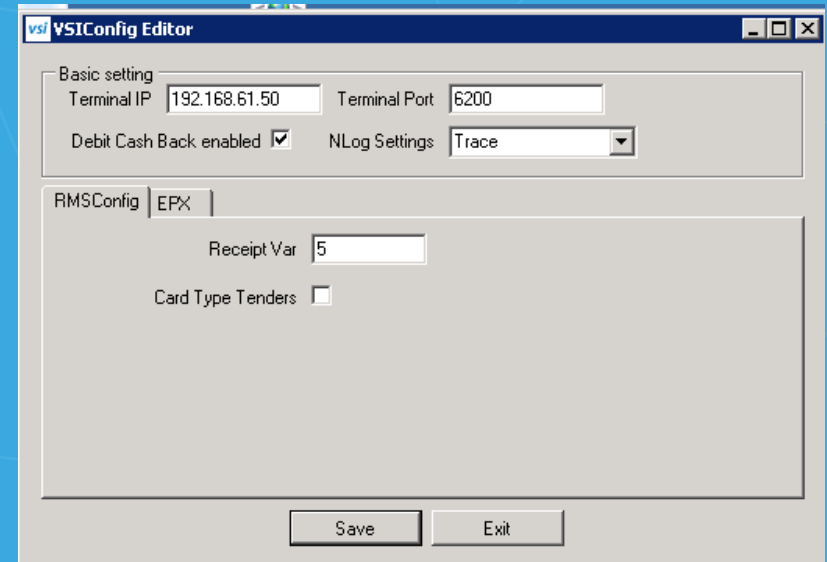
C:\Program Files (x86)\NAB Velocity\Velocity Semi-Integrated RMS Plugin\VSIconfigUI.exe

The Editor allows the following configurations:

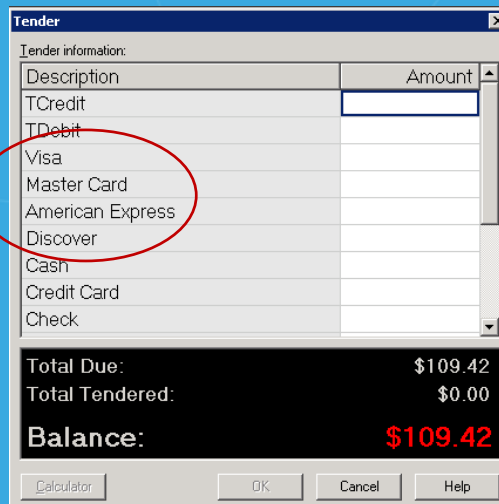
Updating the Terminal IP and Port number in case of a new terminal

Enable/disable Debit Cash Back

Card Type Tenders: If enabled Card Types (VISA, MC, DISC, and Amex) will be available for selection in the Tender Type screen at checkout



- [If the updated payment options \(TCredit/TDebit\) are not displayed in the Tender screen you'll need to run the Z report to update to the configurations and try again.](#)



Velocity RMS-Plugin Installation Guide

Finding The Ingenico's IP address

- Press F
- Enter password 3300 if required followed by Enter (green button)
- Select Telium Manager, press Enter
- Select Consultation, press Enter
- Select Configuration, press Enter
- Select Hardware, press Enter
- Select On Display, press Enter
- Select Hardware Infos, press Enter
- Select Ethernet, press Enter
- Take note of the IP address, NetMask, Gateway, DNS1, and DNS2

Setting the Ingenico's IP address to Static

- Press F
- Enter password 3300 if required followed by Enter (green button)
- Select Telium Manager, press Enter
- Select Initialization, press Enter
- Select Hardware, press Enter
- Select Ethernet Setup, press Enter
- Select Boot Proto, press Enter
- Set the IP to Static press Enter
- Enter the values previously obtained by going to each one of the following menu items and pressing Enter:
 - IP Address
 - Subnet Mask
 - Gateway
 - DNS1
 - DNS2 (if available)